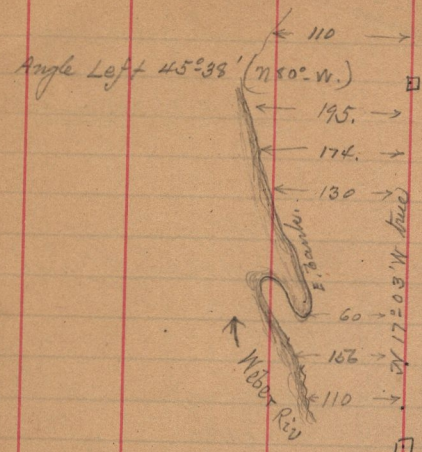


See transit  
Book F. page 12  
City Eng. office

- 7
- 6+18.8
- 6
- 5
- 4
- 3+23
- 3+18
- 3
- 2
- 1



cal. course, N 62° 41' W

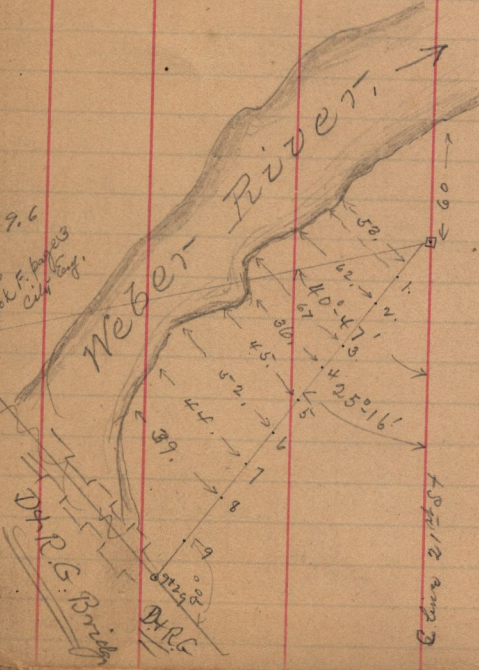
Brush fence S. E  
bottom of banks N. W

cal. course N 17° 03' W

71° 54' deflect. R. (N 34° W)

Sta. O. of Meander = Sta. 15+29  
of City Sta. on center of  
21<sup>st</sup> Street produced.  
Base N 89° 02' W

5+29.6  
25+60  
Book F. page 23  
City Eng.



Sta. O. of meander,  
or Sta. 15+29.6 City Sta.

Chain 21/100